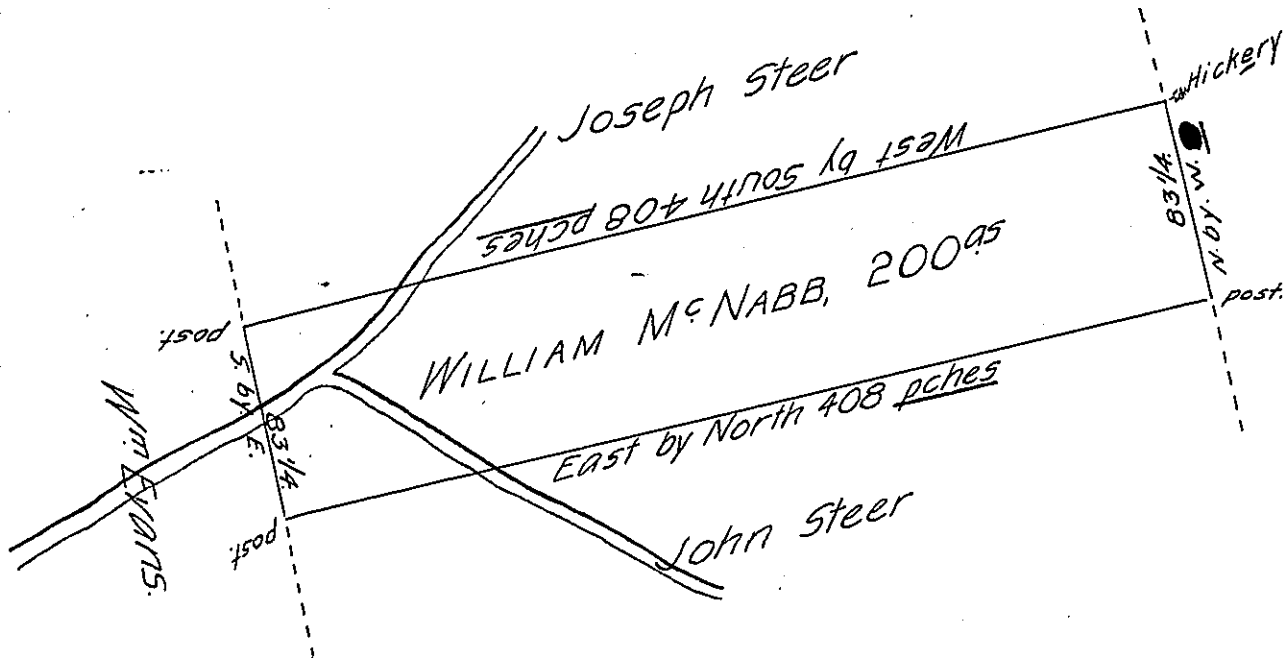


83.25
408
<hr/>
66600
333000
<hr/>
33966/212
13/4



By Virtue of a Warrant from the proprietaries dated the 19th day of January 1733
 Surreyd unto William M^cNabb the 22^d of the Same Month the Tract of Land above
 described. Situate on the Mill Creek in the County of Lancaster, containing
 two hundred acres and the Usual Allowance for Roads

Jn^r Taylor. — —

Mill Creek

IN TESTIMONY that the above is a copy of the original remaining on file in
 the Department of Internal Affairs of Pennsylvania, made
 conformably to an Act of Assembly approved the 16th day of
 February, 1833, I have hereunto set my Hand and caused
 the Seal of said Department to be affixed at Harrisburg,
 this twenty-fifth day of September 1905.

George R. Purvill
 Secretary of Internal Affairs.